

PARKVIEW EMPLOYER CLINICS  
**Employee Information Guide**



## WHY CHOOSE PARKVIEW EMPLOYER CLINICS

Your employer has partnered with Parkview Employer Clinics to offer high-quality healthcare services at no cost to you. By choosing a Parkview Employer Clinic, you gain access to a team of highly skilled healthcare professionals who practice a Lifestyle Medicine approach to provide you with personalized care to enhance your overall well-being.

## WHAT TO EXPECT WITH EMPLOYER CLINICS

Parkview Employer Clinics are reserved solely for the health and well-being of employees throughout northeast Indiana and northwest Ohio. Whether you require routine check-ups, preventive screenings, or treatment for acute ailments, our clinics are here to serve you. We ensure quality time with our experienced providers who listen to your concerns and create personalized treatment plans. Our streamlined scheduling and option for same-day appointments guarantees efficient and timely care. Our focus is you and our top priority is your health.

## ELIGIBILITY

Based on your employers contract, you, your spouse/partner, and dependents may be eligible to utilize our network of Employer Clinics. **Please check with your Human Resources department to verify eligibility.**



# CLINIC LOCATIONS

## ALLEN COUNTY

Northwest Allen County Clinic  
3898 New Vision Drive, Suite C  
Fort Wayne, IN 46845

260-425-4050  
NWAllenEmployerClinic@  
parkview.com

**Provider hours:**

*Mon. & Wed., 8 a.m. - 6 p.m.  
Tues. & Thurs., 8 a.m. - 5 p.m.  
Friday, 12 - 5 p.m.*

*Clinic opens 30-minutes earlier than the time listed on each day for lab draws and medication dispensing.*

## NOBLE COUNTY

Noble County Clinic  
1844 Ida Red Road  
Kendallville, IN 46755

260-347-8236  
NobleEmployerClinic@  
parkview.com

**Provider in-clinic hours:**

*Mon., 10 a.m. - 6 p.m.  
Wed., 8 a.m. - 4 p.m.*

**Provider virtual hours\*:**

*Tues. & Thurs., 8 a.m. - 4 p.m.*

*Clinic opens 1-hour earlier than the time listed on Monday and Wednesday for lab draws and medication dispensing.*

*\*Lab draws and medication dispensing are not available on virtual visit days.*

## KOSCIUSKO COUNTY

Kosciusko County Clinic  
1021 Mariners Drive  
Warsaw, IN 46582

574-372-1274  
KosciuskoEmployerClinic@  
parkview.com

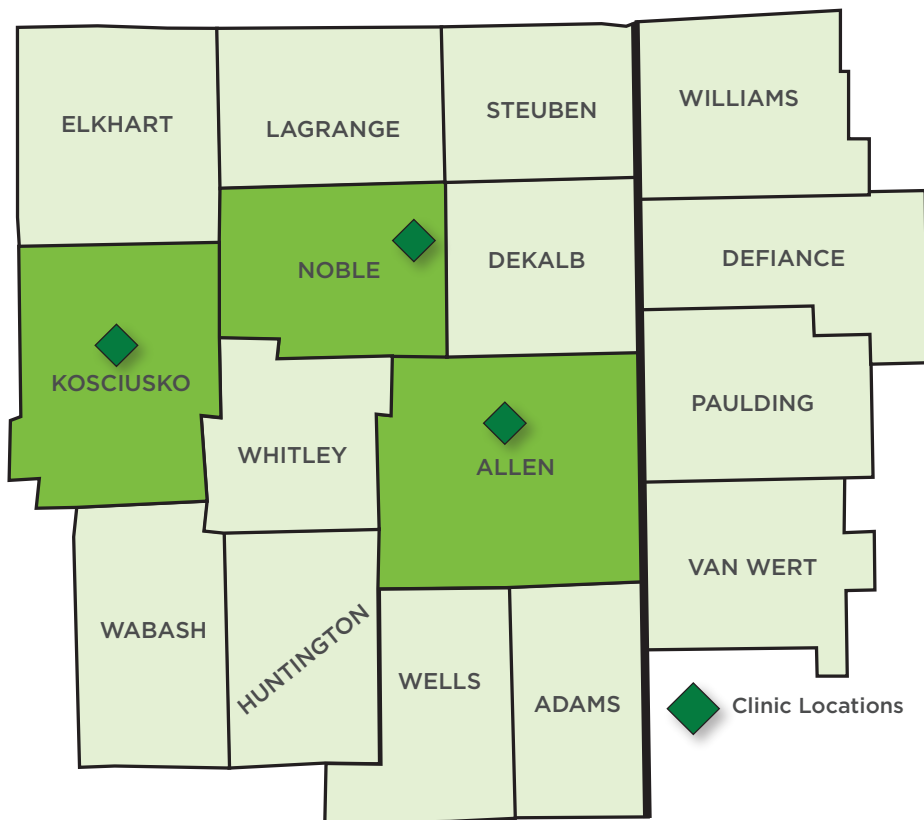
**Provider hours:**

*Tues. & Thurs., 8 a.m. - 4 p.m.  
Wed., 10 a.m. - 6 p.m.*

*Clinic opens 1-hour earlier than the time listed on each day for lab draws and medication dispensing.*

Scan the QR code or visit  
[Parkview.com/EmployerClinicsHub](https://www.parkview.com/EmployerClinicsHub)  
for the most up to date list of  
locations and hours of operation.





### What is a virtual visit at an Employer Clinic?

Patients schedule an appointment and come to the clinic location. Patients are escorted to a private room by medical staff where the patient will use remote exam technology to conduct an enhanced virtual visit with a Parkview Employer Clinic provider.

**Medications cannot be dispensed during a virtual visit, however a prescription can be provided to fill at another employer clinic location or at your pharmacy of choice. Lab testing services are not available on virtual visit days.**



## SCHEDULING AN APPOINTMENT

Our clinics will ensure appointments are seen on time but will accept walk-ins based on availability. We recommend scheduling an appointment as same day appointments are often available.



Visit [Parkview.com/EmployerClinicsHub](https://Parkview.com/EmployerClinicsHub) or scan the QR code with your mobile phone camera to schedule a visit at any of our Employer Clinics.

If you prefer to schedule via phone, please contact the clinic directly. You can also schedule an appointment via your MyChart account. Visit [Parkview.com/EmployerClinicsHub](https://Parkview.com/EmployerClinicsHub) for a short instructional video on how to schedule an Employer Clinic visit through MyChart.

## CLINIC SERVICES

Employer Clinic services are provided to you at no cost. You may visit any of our Employer Clinics for the following services:

- Diagnosis and treatment of most chronic health conditions (hypertension, diabetes, etc.)
- Acute/sick care visits (cold, flu, infections, headache, sprains, eye swelling/irritation, ear pain, minor allergic reactions, etc.)
- Annual exams and physicals (well woman exams, sport physicals, etc.)
- Basic in-office procedures (vaccinations, stitches, skin tag removal, lesions, etc.)
- Access to a medically supervised metabolic wellness program for health and weight loss.
- Access to specialized diabetes treatment team and services.

**If you are experiencing serious injury, severe pain in any body part, chest pain, difficulty breathing, or a mental health crisis, please call 911 or visit an in-network facility.**



## LAB SERVICES

Each Employer Clinic is equipped with a lab to obtain blood draws, cultures, and/or urine collection to diagnose and monitor certain conditions. Lab capabilities include, but are not limited to:

- Comprehensive Metabolic Panel (sodium, creatinine, calcium, albumin, bilirubin, alkaline phosphatase, AST, ALT, chloride, blood urea nitrogen (BUN), globulin, and protein)
- Complete Blood Count Lipid panel (HDL, LDL, triglycerides, cholesterol/HDL ratio)
- Hemoglobin A1C (used to diagnose and monitor diabetes)
- Thyroid Stimulating Hormone (TSH)
- Prostate Specific Antigen (PSA)
- Vitamin and mineral deficiency (B12, D, folate, iron)
- Hormone deficiency (testosterone, estradiol, progesterone)
- C-Reactive Protein
- Throat culture
- Urinalysis
- Hepatic (liver) and Renal (kidney) Function Panel

Scheduled appointments for lab draws are preferred. Lab testing services are not available on virtual visit days. If obtaining labs for a provider outside of Parkview Health, please provide the Employer Clinic your lab requisition 24 hours prior to your appointment.

## MEDICATION FORMULARY

Employer Clinics have access to many of the most prescribed medications in generic form. Medications are provided to you free of charge. Medication categories include:

- Allergy/Asthma/Cold
- Antibiotic/Antifungal/Antiviral
- Diuretic
- Depression/Anxiety
- Diabetes
- Male Health/Female Health
- Migraine
- Osteoporosis/Arthritis
- Nutrition
- Gastrointestinal
- Hypertension/Heart Disease
- Thyroid
- Lipid Management
- Eyes
- Topicals
- Musculoskeletal/Pain

## YOUR CARE TEAM

Embarking on a journey to health and wellness has its challenges, but your care team is here to provide the help, guidance, and support you need to achieve your goals and live a healthy fulfilling life. The team works collaboratively to ensure consistent and personalized support for every patient.

In addition to your care team, a physician medical director oversees the advanced practice providers and guides the clinical scope of practice. A clinic manager, clinic supervisors, and other support professionals oversee the day-to-day operations of the Employer Clinics.







## PREVENTIVE CARE COORDINATORS

We have a team of preventive care coordinators who may reach out to you based on your health status. Preventive care coordinators are registered nurses who guide you through appropriately paced care and tailor a personalized health and wellness plan, addressing both clinical and social needs. Preventive care coordinators provide support with the following:

- Patient education on health condition(s) and medication(s)
- Consult and collaborate with other healthcare providers to coordinate patient appointments and treatment plans
- Assist with the transition of care
- Weight management guidance and accountability
- Assess and monitor patient needs and goals
- Link to community resources
- Create a proactive care plan to address personal healthcare needs

Questions? Reach out to our Preventive Care Coordinators at (260) 266-0264 or [PreventiveCareCoordinator@parkview.com](mailto:PreventiveCareCoordinator@parkview.com).

## WELLNESS COACHING

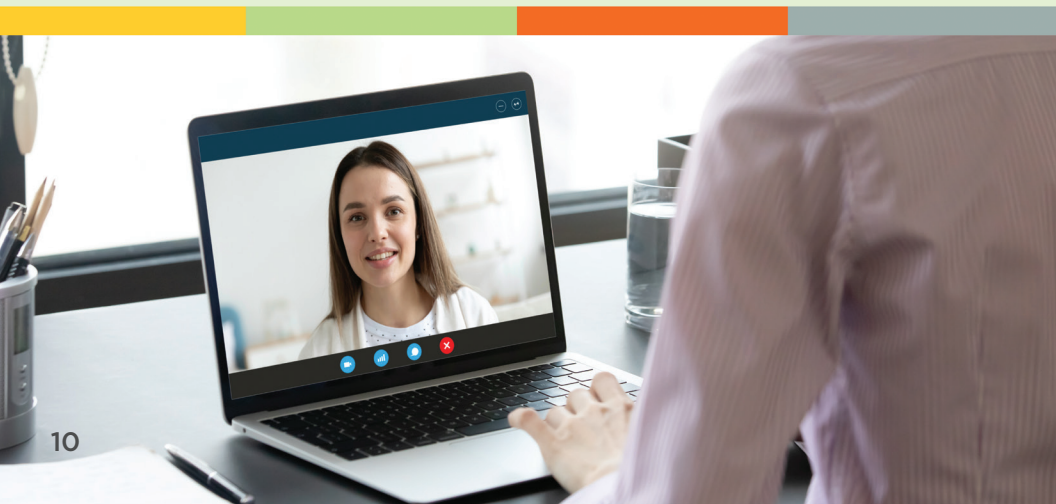
Our certified wellness coaches can provide personalized support to help you meet your wellness goals. They work one-on-one with you virtually to help set goals, answer questions, and celebrate successes. With the support of a wellness coach, you will build confidence in your well-being while tracking and monitoring progress to help you reach the goals you wish to achieve. Your wellness coach is an expert in facilitating sustainable changes in mindset and behaviors.

Your wellness coach will start your coaching journey by discussing your personal wellness goals. Your certified wellness coach can provide guidance and education on the following topics:

- Physical activity
- Weight management
- Nutrition
- Stress management
- Healthy sleep habits
- Blood pressure
- Cholesterol
- Pre-diabetes & diabetes
- General health & wellness

If needed, your wellness coach can also refer you to our registered dietitian.

Your clinic care team may refer you directly to a wellness coach or you can contact [Coaching@Parkview.com](mailto:Coaching@Parkview.com) provide your name and employer, and request a coach.





## **PARKVIEW MYCHART**

Parkview MyChart is a secure and confidential web-based system that allows you to communicate with your provider and access many of your healthcare records. Our Employer Clinic providers use MyChart to ensure streamlined communication with you and your other Parkview Health providers. A MyChart account is not mandatory to utilize Employer Clinics, however it is encouraged.

**If you do not have a MyChart account, you can sign up at [MyChart.Parkview.com](https://MyChart.Parkview.com) or at any of our Employer Clinics.**

## **FREQUENTLY ASKED QUESTIONS**

### **How much does it cost to visit an Employer Clinic?**

Your employer is offering access to Parkview Employer Clinics at no cost to you. This includes available clinic services, labs, and medications. Please check with your HR department to verify your eligibility.

### **Do the Employer Clinics accept walk-ins?**

Walk-in appointments will be accepted based on availability. We encourage scheduling an appointment as same day appointments are often available.

### **Do you offer the medications I currently take?**

Contact your preferred employer clinic to further discuss our acute and chronic medication formulary with a provider.

Find more FAQ at [Parkview.com/EmployerClinicsHub](https://Parkview.com/EmployerClinicsHub).

